

Careers Programme at Bournemouth & Poole College

Mission Statement: Our Careers Programme is designed to empower students with the skills, knowledge, and confidence to make informed decisions about their future. We aim to support each student in achieving their career aspirations through comprehensive careers guidance, meaningful experiences, and robust employer partnerships.

Overview: This programme is structured around the Gatsby Benchmarks for good career guidance, ensuring that all students have access to high-quality career support. It caters to diverse needs, whether students are progressing to higher education, apprenticeships, employment, entrepreneurship or independence.

College Strategy 2030: The Careers Programme is directly linked to our College Strategy 2030, and specifically to the below strands:

- **Improving More Lives Through Education-** Unlocking potential through exceptional skills-based training
- **Exceptional Education for the Real World-** Empowering every student to succeed now, and in their future.



Key Objectives:

1. To inspire students with knowledge of a wide range of career paths.
2. To support students in developing personal and professional skills.
3. To equip students with the tools to navigate their career pathways confidently.

Programme Components:

| Component | Description |
|--------------------------------------|--|
| Careers Advice and Guidance | One-to-one sessions or workshops with qualified and impartial Careers Advisers who are Matrix Accredited, qualified to a minimum of Level 6 and hold membership to the Careers Development Institute. Career planning tools and assessments to identify strengths, interests, and goals. |
| Curriculum Integration | Embedding career education in our professional and technical courses. Sessions on progression plans, CV writing, job applications, and interview skills delivered within the BPC Grow Programme. Employer-led masterclasses and subject-specific career talks led by curriculum areas. |
| Work Experience | Work experience placements tailored to students' interests and ambitions. |
| Employer Engagement | Employer partnerships, workplace tours, visiting speakers and career fairs. |
| Higher Education and Training | UCAS workshops, university visits, and alternative pathway information. |
| Inclusive Support | Tailored service and advice for SEND students with specialised roles such as Careers Adviser (SEND) and SEND Progression Coach. In addition, tailored support for students less likely to access level 4 options via a specialised roles- Careers Adviser (UCAS Coordinator) and SUN (Southern University Network) Progression Mentor. |
| Career Resources | Dedicated Career Hubs, online platforms such as Kudos, and moodle resources. |

Programme Delivery: The career programme is delivered through a combination of drop-in sessions, booked appointments, BPC Grow sessions and integrated curriculum activities.

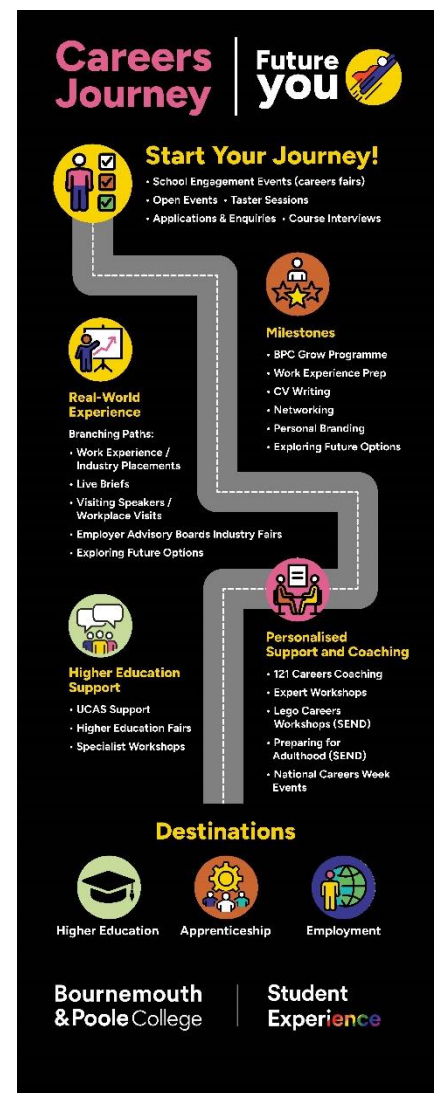
Key Annual Highlights (See Appendix 1 for full overview):

- Autumn Term: Welcome Fest and Induction – Introduction to Career Services.
- Spring Term: Progression Talks- BPC Grow, National Career Week activities.
- Summer Term: UCAS Cycle opens

Impact Measurement: We will evaluate the programme's effectiveness through:

- Student feedback.
- Maintaining the Matrix Accreditation.
- Regular reviews against Gatsby Benchmarks.

Contact Us: For more information, please contact the Careers Guidance Team at adviceandguidance@bpc.ac.uk or visit the Careers Hub in Room 13 at our Bournemouth Campus or Room 19 at our Poole Campus.



Appendix 1- Careers Entitlement

| Your Careers Entitlement 25-26 | Education Programmes for Young People | | | Adult/ Apprentices/ HE Students |
|---|--|----------------|----------------|--|
| | Entry Level and Level 1 | Level 2 | Level 3 | All Levels |
| Induction Week: Overview of Careers Advice and Guidance Team and people who can support you with your career planning (BPC Grow Programme) | ✓ | ✓ | ✓ | ✓ |
| Induction Week: Tour of the College, including the Career Ready Hubs | ✓ | ✓ | ✓ | ✓ |
| Throughout the year: individual tutorials, including career planning | ✓ | ✓ | ✓ | ✓ |
| Throughout the year: Impartial 1:1 support from the Careers Advice and Guidance Team | ✓ | ✓ | ✓ | ✓ |
| Throughout the year: individual support and career planning for students with Special Educational and Support Needs (SEND) | ✓ | ✓ | ✓ | ✓ |
| Throughout the year: Personal career research using College career planning resources such as Kudos, completing My Career Plan | ✓ | ✓ | ✓ | ✓ |
| Throughout the year: curriculum-based careers-related activities, industry talks, collaboration projects and trips | ✓ | ✓ | ✓ | ✓ |
| Throughout the year: Preparation for work experience (BPC Grow Programme) | ✓ | ✓ | ✓ | |
| Throughout the year: Course Tasters (Welcome Team) | ✓ | ✓ | ✓ | |
| Spring Term: Career planning progression talks | ✓ | ✓ | ✓ | ✓ |
| Autumn Term: Higher Education and UCAS talks | | ✓ | ✓ | |
| Spring Term: Higher Education visits | | | ✓ | |
| Each term: College Open Events | ✓ | ✓ | ✓ | ✓ |
| Southern University Network (SUN): supports groups and individuals | | ✓ | ✓ | |
| Individual work experience placements and enrichment activities | ✓ | ✓ | ✓ | |